

# Pollution Prevention

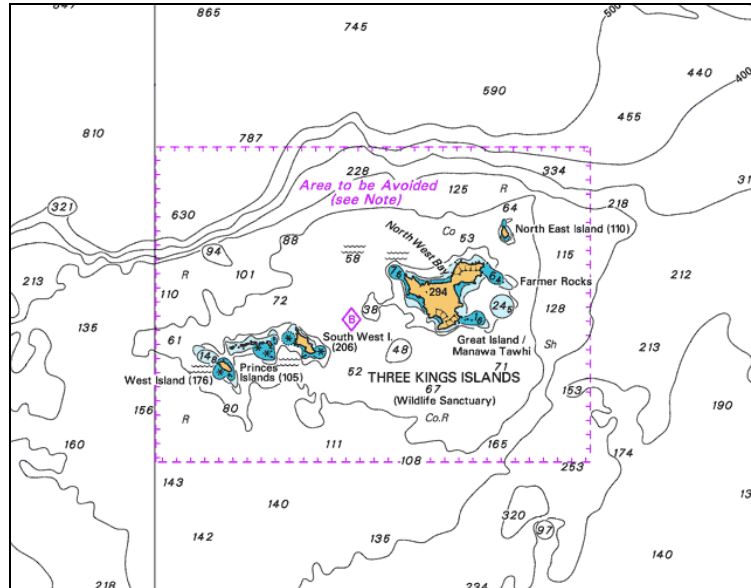
## SHIPPING ROUTEING – AREAS TO BE AVOIDED

### Three Kings Islands

- (1) 34° 06'. 00 S 172° 00'. 00 E
- (2) 34° 06'. 00 S 172° 12'. 50 E
- (3) 34° 13'. 50 S 172° 12'. 50 E
- (4) 34° 13'. 50 S 172° 00'. 00 E



The Three Kings Islands, situated off the northern tip of the North Island, were declared as a Wildlife Sanctuary in 1995. The area is protected to avoid the risk of pollution and damage to the environment from ships of 500 gross tons or more.

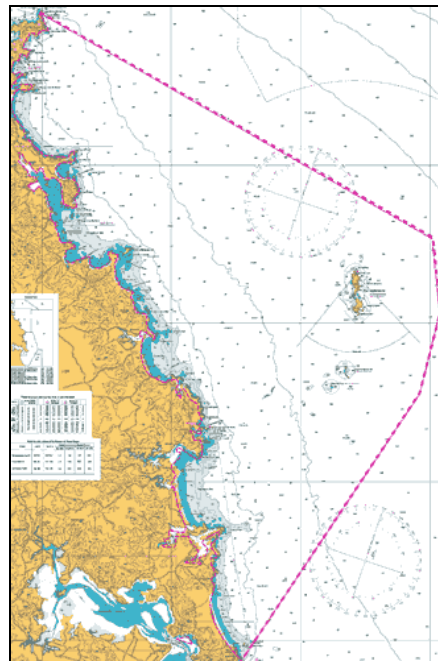


### Poor Knights Islands

- (1) 35° 51'.30S 174° 35'.50E
- (2) 35° 34'.55S 174° 49'.20E
- (3) 35° 29'.60S 174° 50'.80E
- (4) 35° 24'.70S 174° 50'.20E
- (5) 35° 10'.20'S 174° 20'.10E

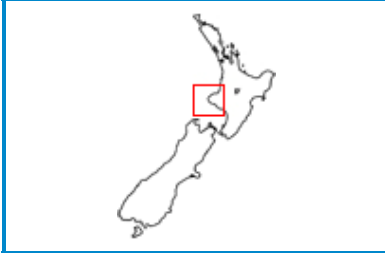


The extended area around the Poor Knights Islands, situated off the North-East coast of the North Island, were identified as an area to be avoided in 2003. This area incorporates a marine reserve close to the islands. It is protected to avoid the risk of pollution and damage to the environment from ships of 45 m overall length or more.



## Taranaki Offshore Area

- (1) The charted line of MHWS at approximately  $38^{\circ} 31'.00\text{S } 174^{\circ} 37'.80\text{E}$
- (2)  $39^{\circ} 18'.50\text{S } 173^{\circ} 05'.00\text{E}$
- (3)  $39^{\circ} 26'.00\text{S } 173^{\circ} 01'.00\text{E}$
- (4)  $40^{\circ} 03'.00\text{S } 173^{\circ} 04'.00\text{E}$
- (5)  $40^{\circ} 10'.00\text{S } 173^{\circ} 16'.00\text{E}$
- (6) The charted line of MHWS at approximately  $39^{\circ} 53'.50\text{S } 174^{\circ} 54'.50\text{E}$



An extended area off the Taranaki coast has been declared a precautionary area with effect from 2007. The area covers a high level of offshore petroleum operations including two floating production, storage and offloading facilities serviced by offtake tankers. All ships should navigate with particular caution in order to reduce the risk of a maritime casualty and resulting marine pollution.

